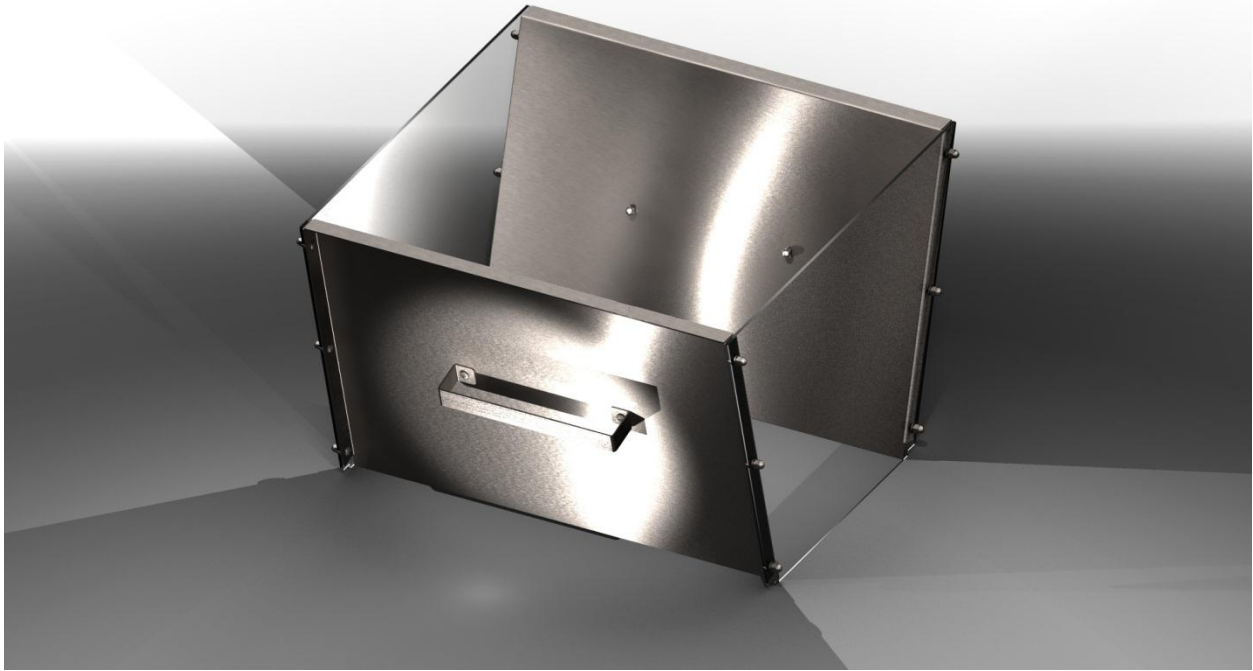


RCS Stock Chiller Counter-Top SC02 & SC03 Setup Instructions: Ice Chute Assembly



RCS Stock Chiller Counter-Top SC02 & SC03 Setup Instructions: Ice Chute Assembly

Tools needed:

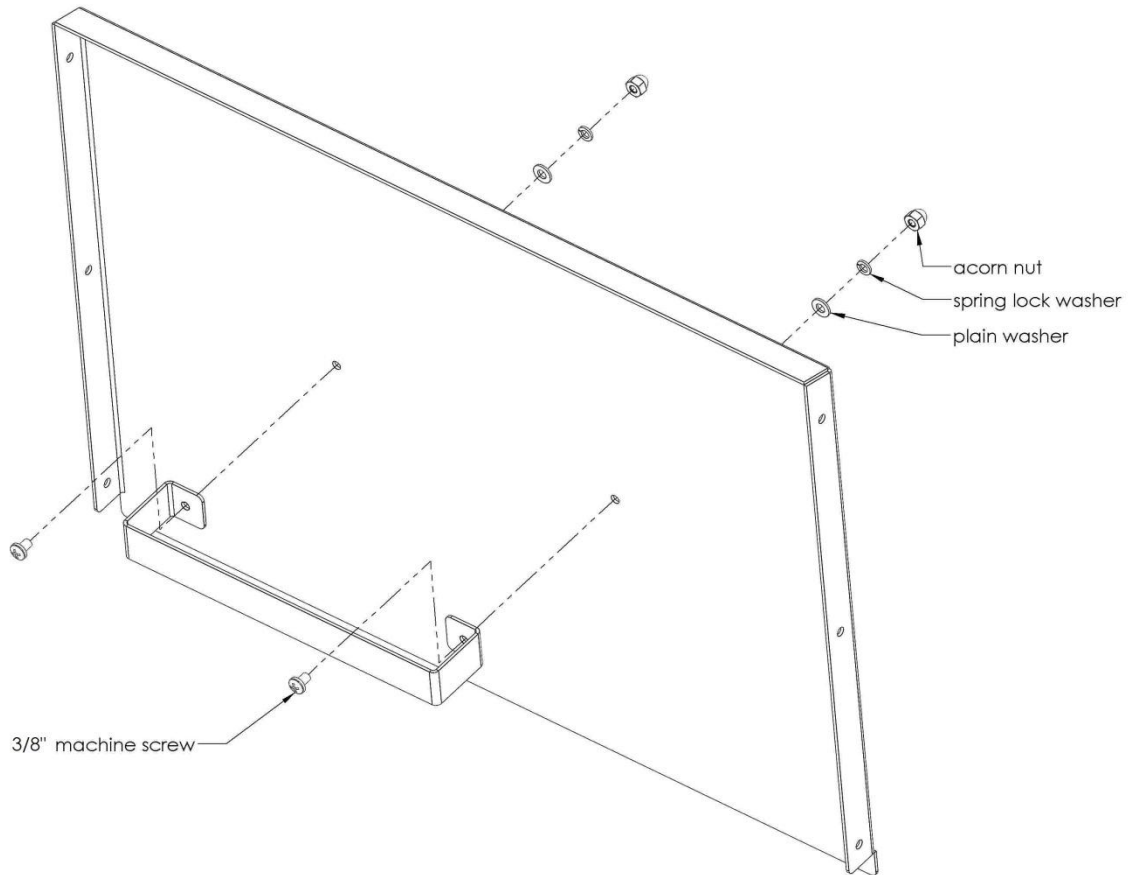
- Phillips head screw driver or variable speed driver with a Phillips head bit
- A small adjustable wrench or pliers

If you need any assistance call our service and support department at 1-877-C-COOLER (1-877-226-6537) or email info@stockchiller.com.

RCS Stock Chiller Counter-Top SC02 & SC03 Setup Instructions: Ice Chute Assembly

Directions:

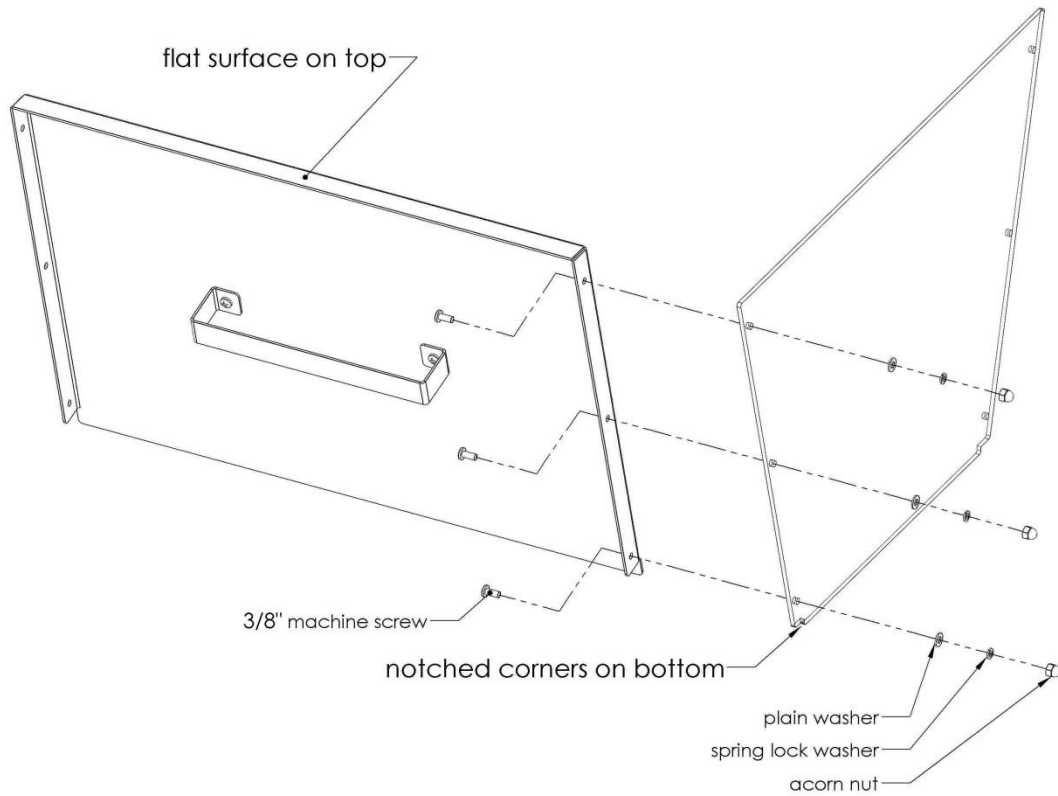
1. Unpack the ice chute materials.
2. Assemble the handle to the stainless steel plate as shown in the figure below. For NSF compliance, the acorn nuts must be placed inside the unit. Hand tighten the acorn nuts after placing the plain washer and the spring lock washer. Repeat for both sets of handles and plates.



If you need any assistance call our service and support department at 1-877-C-COOLER (1-877-226-6537) or email info@stockchiller.com.

RCS Stock Chiller Counter-Top SC02 & SC03 Setup Instructions: Ice Chute Assembly

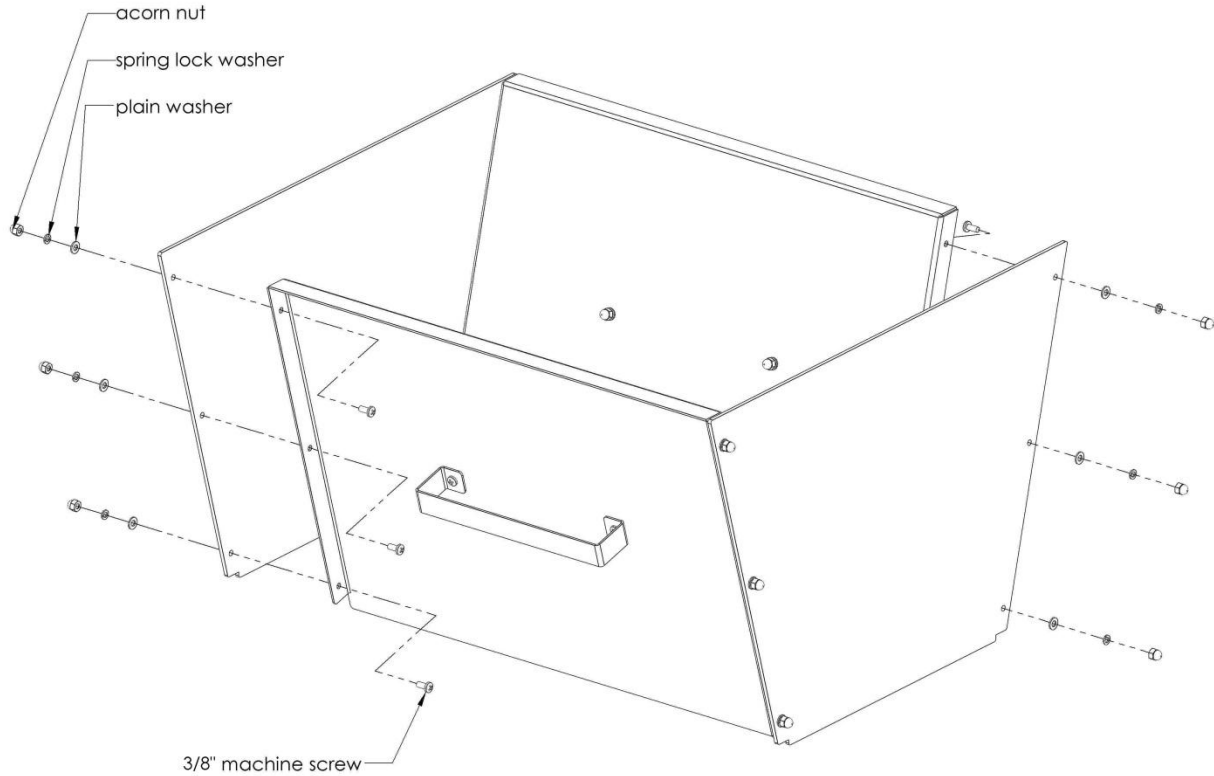
2. Attach one of the clear plastic sides to the metal plate using 3 of the 3/8" machine screws as shown in the figure below. Note the location of the notches in the plastic relative to the plate. Tighten each machine screw using a screwdriver while holding the acorn nuts in place with a wrench or pliers. Repeat the process for the other stainless steel plate and plastic sheet.



If you need any assistance call our service and support department at 1-877-C-COOLER (1-877-226-6537) or email info@stockchiller.com.

RCS Stock Chiller Counter-Top SC02 & SC03 Setup Instructions: Ice Chute Assembly

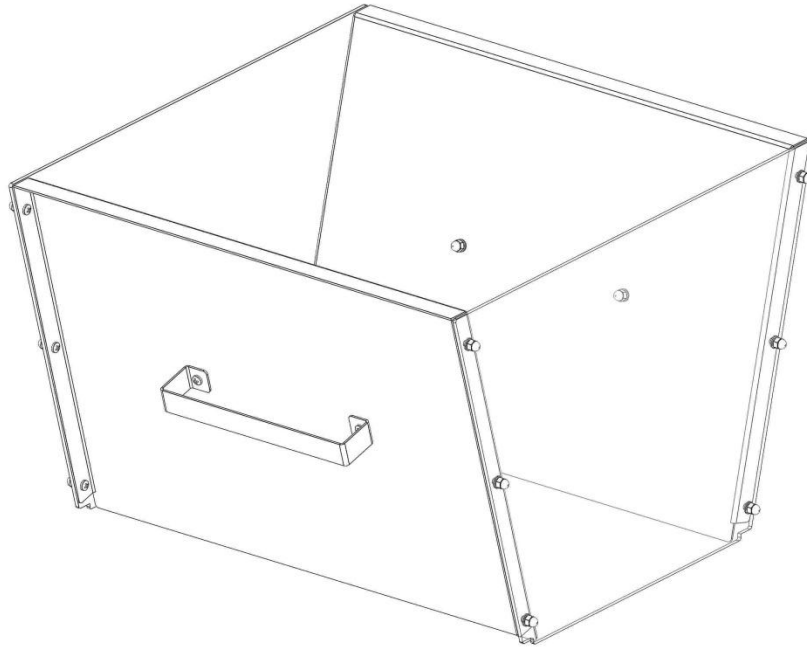
3. Attach the two halves of the ice bin together as shown in the figure 3/8" machine screws. Tighten each machine screw using a screwdriver while holding the acorn nuts in place with a wrench or pliers.



If you need any assistance call our service and support department at 1-877-C-COOLER (1-877-226-6537) or email info@stockchiller.com.

RCS Stock Chiller Counter-Top SC02 & SC03 Setup Instructions: Ice Chute Assembly

4. The completed ice chute should be similar to the one in the picture below. The nuts and bolts should be checked to be tight once a week.



If you need any assistance call our service and support department at 1-877-C-COOLER (1-877-226-6537) or email info@stockchiller.com.